

MINISTRY OF EDUCATION

ST. VINCENT AND THE GRENADINES



COMMON ENTRANCE EXAMINATION

2009

GENERAL PAPER

TEST CODE: 013A

Time allowed: 1 Hour & 30 minutes

Instructions:

1. This examination has 60 items.
Each item has four possible answers: **A, B, C, D.**
Choose the correct answer.
2. On your answer sheet, shade the circle which contains the letter you have chosen for your answer.

Please use a No. 2 HB pencil

3. **Do not take any paper out of the examination room.**
Return this booklet, your answer sheet and all scrap paper to the invigilator before you leave the room.
4. You have **90 minutes** in which to complete this test.

1 Who is the first African American President of the United States of America?

- A. Jessie Jackson
- B. Hilary Clinton
- C. John McCain
- D. Barack Obama

2 Which of the following is NOT one of our National symbols?

- A. Soufriere tree
- B. Amazona Guildingi
- C. White sand beaches
- D. Roasted breadfruit and Fried jackfish

3 St. Vincent & the Grenadines became independent in 1979. Who was the first Governor General?

- A. Sir David Jack
- B. Sir Lambert Eustace
- C. Sir Rupert John
- D. Sir Sydney Gun-Munro

4 Where in St. Vincent and the Grenadines did archaeologists discover artefacts and human remains thought to be about 2000 years old?

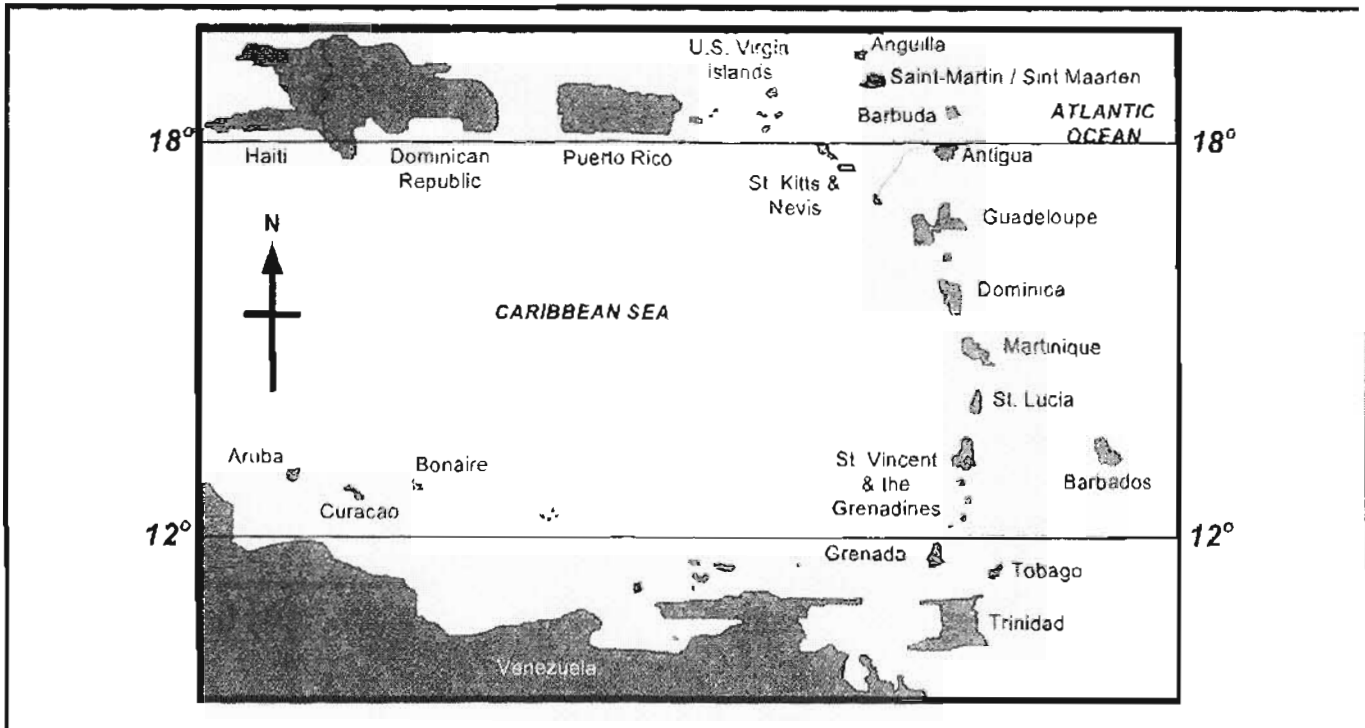
- A. Owia
- B. Layou
- C. Argyle
- D. Barrouallic

5 Sue and her family are vacationing in Italy. Which currency are they MOST likely to use when shopping?

- A. Euro
- B. Peso
- C. Yen
- D. Pound

6 A country promoting sports tourism will invest in all of the following EXCEPT

- A. Stadium
- B. Whaling
- C. Gymnasium
- D. International Airport



Use the map above to answer question **7** , **8** and **9**

7

In which climatic zone are the Caribbean Islands located?

- A. Semi-Temperate
- B. Temperate
- C. Frigid
- D. Tropical

8

In which direction will one travel from E. T. Joshua Airport to get to Piarco International Airport?

- A. East
- B. West
- C. North
- D. South

9

Which French-speaking island is closest to Barbados?

- A. Haiti
- B. Saint-Martin
- C. Martinique
- D. Guadeloupe

10 Which Caribbean Island belongs to both the Windward Islands and the Lesser Antilles groupings?

- A. Puerto Rico
- B. Dominica
- C. Martinique
- D. Montserrat

11 Mrs. Miguel visited all OECS countries during 2008. One of the countries she visited was

- A. Barbados
- B. Puerto Rico
- C. Antigua and Barbuda
- D. Trinidad and Tobago

12 In the table below which festival is correctly matched with the country where it is celebrated?

	Country	Festival
A	Barbados	John Canoe
B	Grenada	Nine Mornings
C	Jamaica	Crop Over
D	Trinidad and Tobago	Divali

13 Meridians and Parallels of latitude help us to

- A. separate countries
- B. know the exports of a country
- C. divide seas and oceans
- D. locate places on a globe

- 14 To be nominated as a candidate in the general elections in St. Vincent and the Grenadines, a person must
- A. have at least 5 CSEC subjects
 - B. be a citizen of St. Vincent and the Grenadines
 - C. have campaigned for a candidate in the previous election
 - D. have enough money to be used for campaigning
- 15 When an immigration officer uses expressions such as “May I help you” and ‘Thank you’, he is demonstrating
- A. affection
 - B. courtesy
 - C. authority
 - D. flattery
- 16 Which one of the following statements refers to weather but **NOT** climate?
- A. It is too windy to play tennis
 - B. February is our driest month
 - C. In the very cold months, the tourists visit the Caribbean
 - D. The country in which Sue lives has no dry summers
- 17 If there is an outbreak of the disease dengue fever in St. Vincent and the Grenadines, which Government Ministry will be responsible for dealing with it?
- A. Ministry of Education
 - B. Ministry of Foreign Affairs
 - C. Ministry of Agriculture, Forestry and Fisheries
 - D. Ministry of Health and the Environment

18 In which of the following ways is the world's economic crisis **MOST LIKELY** to affect St. Vincent and the Grenadines?

- A. More jobs for Vincentians overseas
- B. An increase in migration to other countries
- C. More tourist arrivals to St. Vincent and the Grenadines
- D. Less monies being sent home from relatives and friends abroad

19 After retiring from the teaching profession Mr. and Mrs. Browne visited two Caribbean countries. They found Amerindian descendants living there. The countries they visited were

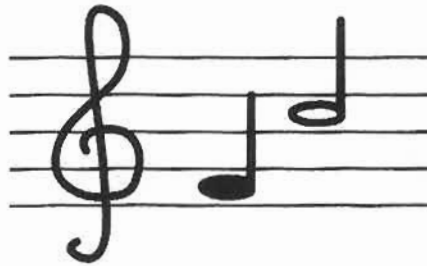
- A. Grenada and Venezuela
- B. Dominica and Belize
- C. Dominica and Antigua
- D. Barbados and Belize

20 How many letters are there in the musical alphabet?

- A. 5
- B. 7
- C. 14
- D. 26

21 The sign at the beginning of a line of written music that shows the pitch of the notes is known as a

- A. Clef
- B. Cliff
- C. Staff
- D. Pitcher



22 Which of the following is **NOT** a musical style?

- A. Folk
- B. Soca
- C. Reggae
- D. Oldie-Goldies

23 Which of the following is equal to four (4) counts?



A. Eighth note



B. Whole note



C. Quarter note



D. Half note

Use the following information to answer questions

24

25

and

26

A Band Director is conducting his rehearsal and realizes that a section of the orchestra is missing. As a substitute, he starts clapping and tapping his feet to the pulse of the music.

24 What is the Band Director trying to provide?

- A. beat
- B. pitch
- C. melody
- D. harmony

25 Which instrument was he trying to imitate?

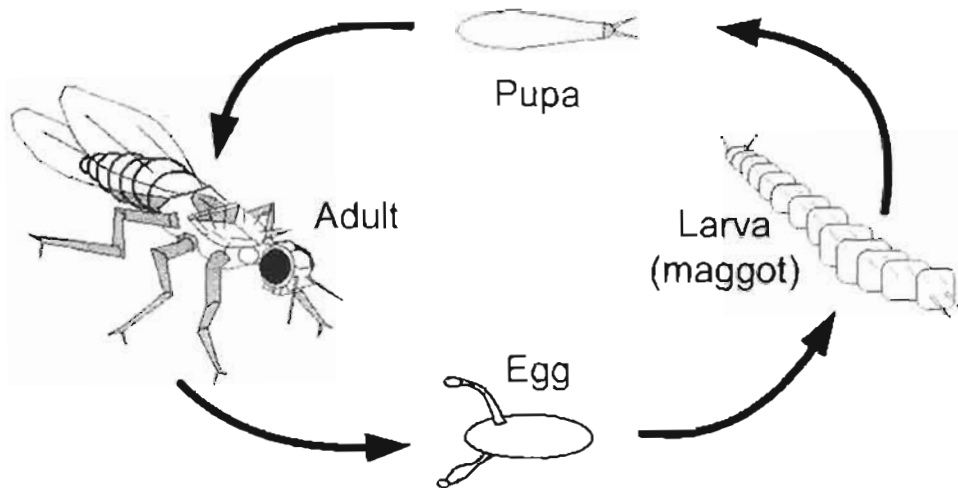
- A. Drum
- B. Guitar
- C. Steel-Pan
- D. Keyboard

26 After playing the first section, the Band Director wants the band to play softer and then get louder again. Which word should he use?

- A. timbre
- B. tempo
- C. duration
- D. dynamics

- 27 The home of Calypso music is
- A. America
 - B. Jamaica
 - C. Trinidad & Tobago
 - D. St. Vincent & the Grenadines
- 28 The winning song for the first Independence Calypso Competition in St. Vincent and the Grenadines "Our Nation is Born" was written by whom?
- A. Kevin Lyttle
 - B. Alston 'Becket' Cyrus
 - C. The Honorable Dr. Ralph Gonsalves
 - D. Kenneth Alleyne 'The Vibrating Scares'
- 29 Which of these is sure to increase as a submarine dives deeper into the ocean? The
- A. water pressure
 - B. water temperature
 - C. freshness of the water
 - D. number of plants in the water
- 30 Which of the following changes is possible with the addition of heat?
- A. Liquid water changes to ice.
 - B. Water vapour changes to ice.
 - C. Ice changes to liquid water.
 - D. Water vapour changes to liquid water.
- 31 Which gas contributes **MOST** to global warming?
- A. Oxygen
 - B. Nitrogen
 - C. Carbon dioxide
 - D. Sulphur dioxide

32



The diagram above shows the life cycle of a fruit fly. During the larva stage, **MOST** of the organism's time is spent

- A. eating
- B. resting
- C. laying eggs
- D. growing wings

33

A strip of land is cleared of trees and bushes to make space for a power line. What impact might this have on birds living in the area?

- A. Weather conditions may change
- B. The rate of erosion will decrease
- C. There will be less food and shelter
- D. The natural enemies of birds will be eliminated

34

Two students wanted to find out which of their toy race cars would go the farthest. They let each car roll down a ramp and then measured how far the cars rolled. Which of these should be held constant if they want a fair test of their cars? The

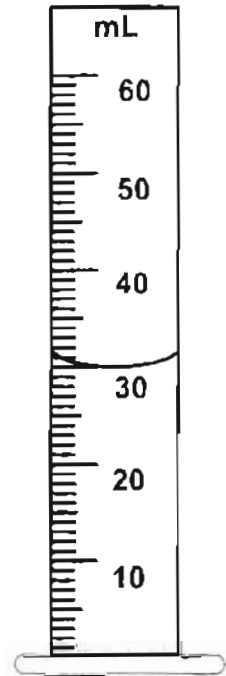
- A. height of the ramp
- B. weight of the ramp
- C. length of the cars
- D. shape of the cars

35 A person will see a flash of lightning before they hear the thunder that goes with it because

- A. the eye is quicker than the ear
- B. the thunder occurs much later than lightning
- C. sound travels faster through the atmosphere than light
- D. light travels faster through the atmosphere than sound

36 If 5 millimetres of vinegar are added to the water in the cylinder on the right, what will be the total volume of the liquid?

- A. 27 millimetres
- B. 30 millimetres
- C. 35 millimetres
- D. 37 millimetres

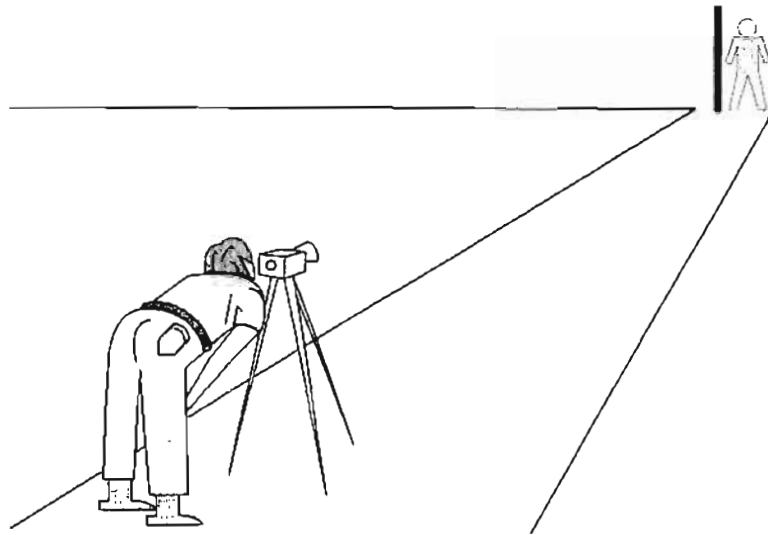


37 The chart on the right shows the time it took for bean seeds to germinate at different temperatures. If the trend continues, at a temperature of 5°C the seeds probably will germinate in

- A. 5 days
- B. 8 days
- C. 13 days
- D. 16 days

Temperature (°C)	Days to Germinate
25	5
20	7
15	9
10	11
5	?

38



This surveyor in the above picture is measuring the length of a street. The **MOST** appropriate unit for this measurement is

- A. millimetre
- B. centimetre
- C. decimetre
- D. metre

39

Which two forms of energy does a flame from a burning candle release?

- A. Light and heat
- B. Heat and nuclear
- C. Chemical and electrical
- D. Electrical and mechanical

40

Which of the following characteristics of a kitten is most likely inherited from its parents?

- A. Torn ear
- B. Brown hair
- C. Scar on its leg
- D. Chipped tooth

41

Some students were studying the properties of water. One student placed a cup containing 80 ml of water in a freezer. Another student placed an identical cup containing 40 ml of water in a different freezer. Which of the following will be the same for both cups of water?

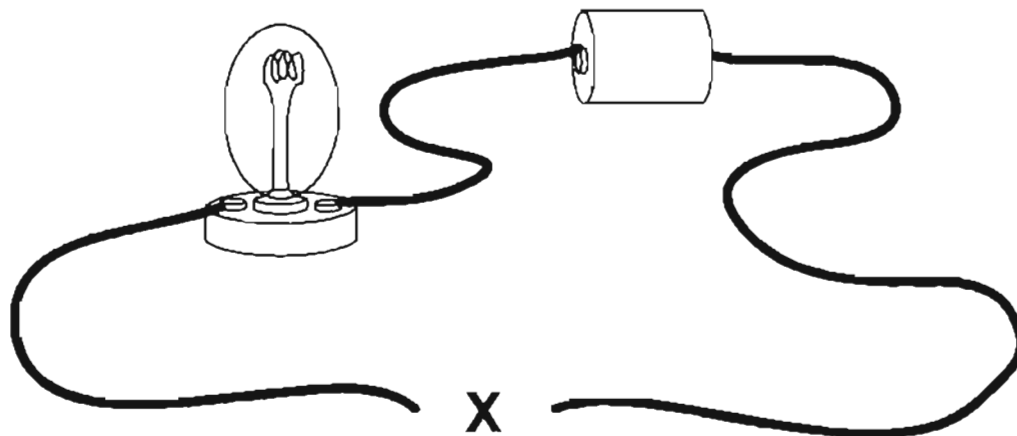
- A. The mass of the frozen water
- B. The volume of the frozen water
- C. The time it takes the water to freeze
- D. The temperature at which the water freezes

42

A bumblebee produces waves in the air as it flies from flower to flower. What can these air vibrations produce?

- A. Sound
- B. Light
- C. Oxygen
- D. Carbon

43



In the diagram above, a student plans to make the light bulb glow. All of the following objects can be placed at **X** to complete the circuit **EXCEPT**

- A. a copper coin
- B. a plastic comb
- C. a metal clip
- D. an iron nail

44 Which of these causes day and night on Earth?

- A. Earth orbiting the sun
- B. The moon orbiting Earth
- C. Earth rotating on its axis
- D. The moon blocking sunlight

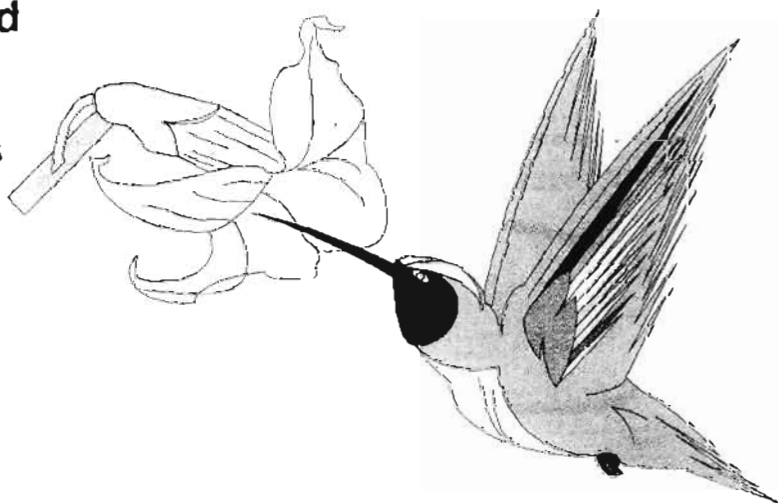
45 A teaspoon of clean, dry sand is added to a cup of warm saltwater. What is most likely to happen after the mixture is stirred and then placed on a table for five minutes?

- A. The cup will heat up.
- B. The salt will float to the top.
- C. The sand will settle to the bottom.
- D. The amount of water will increase.

46

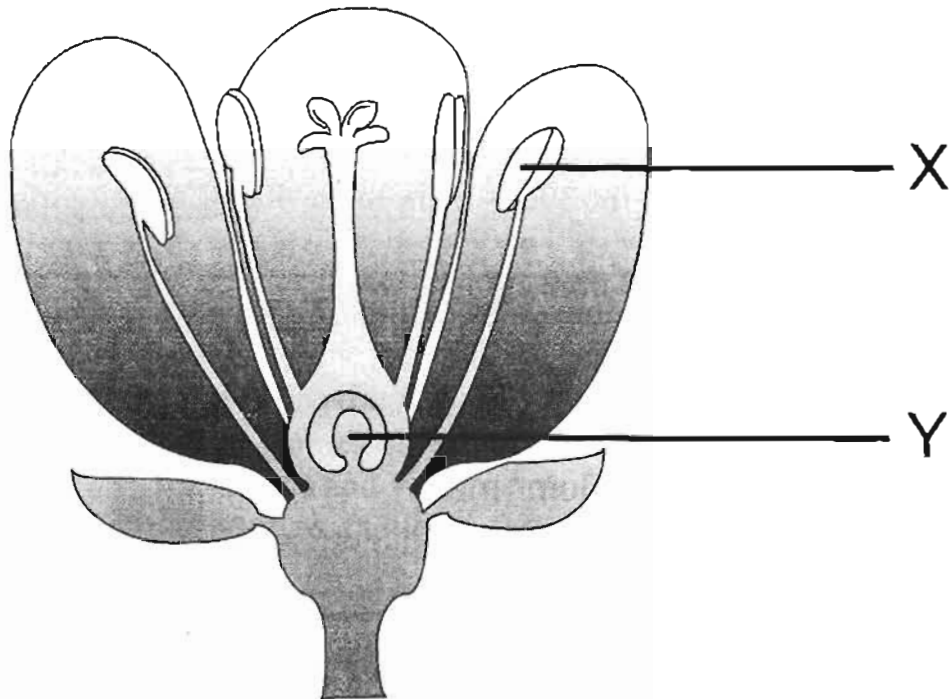
Characteristics of a Hummingbird

- 1. Colorful feathers
- 2. Narrow beak
- 3. Small body
- 4. Strong wings



All of the characteristics listed above are useful for gathering food **EXCEPT**

- A. 1
- B. 2
- C. 3
- D. 4



Use the diagram above to answer the following question

Which line of the table shows the sex of the parts labelled **X** and **Y**?

	X	Y
A	Male	Male
B	Male	Female
C	Female	Male
D	Female	Female

Use the information below to answer questions

48

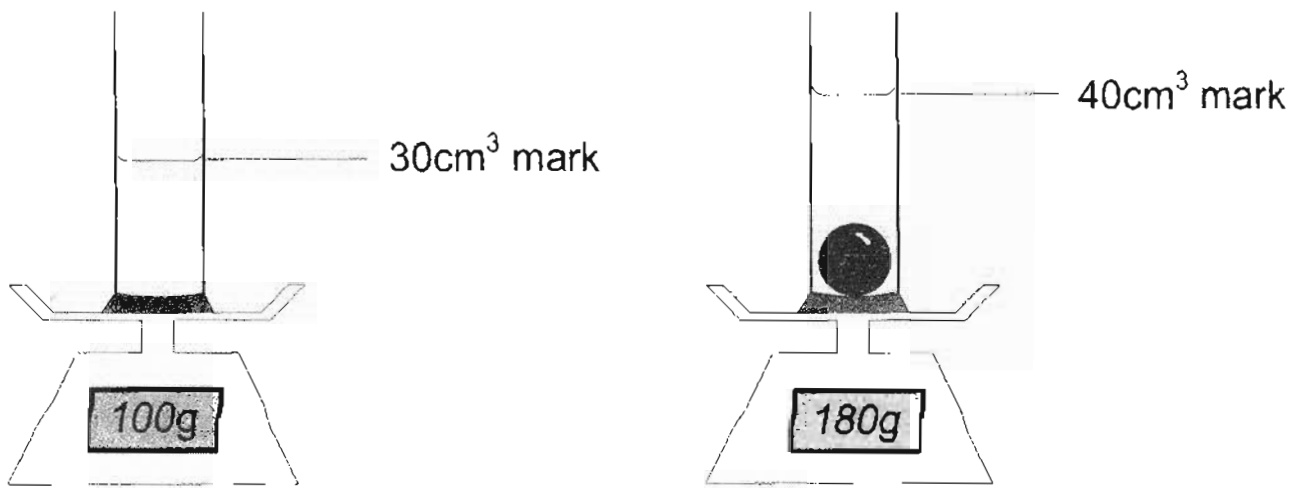
and

49

A measuring cylinder containing some water stands on a scale pan. A solid ball is lowered into the water.

The water level rises from the 30cm^3 mark to the 40cm^3 mark.

The scale reading increases from 100g to 180g.

**48**

The volume of the ball in cm^3 is

- A. 70
- B. 40
- C. 30
- D. 10

49

What is the mass of the ball?

- A. 80g
- B. 100g
- C. 180g
- D. 280g

50 Allan's teacher shouted that he should sit and be quiet. Which aspect of his personality is **LEAST** likely to be affected?

- A. Self help
- B. Self worth
- C. Self esteem
- D. Self confidence

51 Which of the following is the **BEST** thing to do if someone offers you an illegal drug?

- A. Try a little of it to see if it is good
- B. Report it to your parents or teachers
- C. Take enough for you and your friends
- D. Take a little and try not to let anyone see you

52 The Wellness Revolution in St. Vincent and the Grenadines encourages Vincentians to

- A. exercise regularly
- B. take medication often
- C. eat a snack as often as possible
- D. walk less so that you can store up energy

53



The children in the picture above suffer from Kwashiorkor. A deficiency in which one of the following nutrients is responsible for this disease?

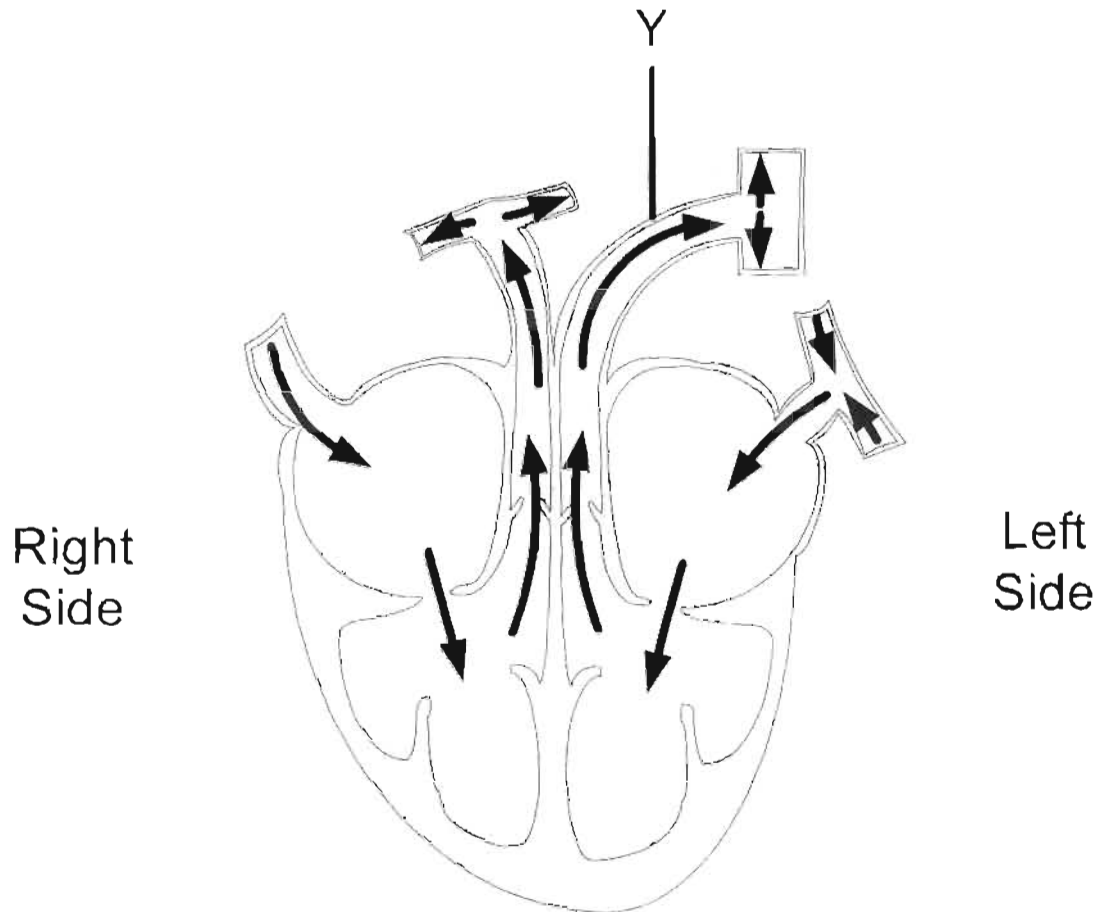
- A. Iron
- B. Protein
- C. Vitamin C
- D. Carbohydrates

Use the diagram below to answer questions

54

and

55



54

The upper right chamber of the heart

- A. pumps blood to the lungs
- B. collects blood from the body
- C. receives blood from the lungs
- D. pushes blood to the rest of the body

55

The name of the part labelled **Y** is the

- A. Aorta
- B. Vena Cava
- C. Pulmonary Vein
- D. Pulmonary Artery

56 Which one of the following actions is **NOT** a function of the skin?

- A. regulates body temperature
- B. protects tissues from injury
- C. makes new blood cells
- D. gets rid of sweat

57 First Aid is important for all of the following reasons **EXCEPT**

- A. preserving life
- B. preventing the recovery of a patient
- C. providing immediate attention to a patient
- D. preventing a medical problem from becoming worse.

58 Which body system contains the bladder, kidneys and ureter?

- A. Reproductive
- B. Digestive
- C. Urinary
- D. Nervous

59 Which of the following practices can **BEST** reduce the number of mosquitoes in our neighbourhood?

- A. sleeping under mosquito nets
- B. keeping green plants in our houses
- C. closing all windows during the night
- D. removing all stagnant water from our surroundings

60 Sharon observes hair growing under her armpit and pubic areas. Which one of the following stages of development is she most likely experiencing?

- A. puberty
- B. childhood
- C. adulthood
- D. reproduction