

MINISTRY OF EDUCATION
ST. VINCENT AND THE GRENADINES
COMMON ENTRANCE EXAMINATION

2006

GENERAL PAPER

TEST CODE: 013A

Time allowed: 1 hour 30 minutes

Instructions:

1. This examination has 60 items.
Each item has four possible answers: **A, B, C, D.**
Choose the correct answer.
2. On your answer sheet, shade the circle which contains the letter you have chosen for your answer.

Please use a No. 2 HB pencil

3. **Do not take any paper out of the examination room.**

Return this booklet, your answer sheet and all scrap paper to the invigilator before you leave the room.

4. You have **90 minutes** in which to complete this test.

1. The words of the National Anthem of St. Vincent & the Grenadines were written by
 - A. Joel Miguel
 - B. Phyllis Punnett
 - C. Milton Cato
 - D. George Mc Intosh

2. This Caribbean artiste made Reggae music popular.
 - A. Bob Marley
 - B. Mighty Sparrow
 - C. Alston (Becket) Cyrus
 - D. Kevin Lyttle

3. The musical term which refers to the length of a sound is
 - A. Pitch
 - B. Dynamics
 - C. Duration
 - D. Timbre

4. Which group of instruments below belongs to the string family?
 - A. guitar, violin, harp, banjo
 - B. guitar, drum, trumpet, saxophone
 - C. guitar, flute, harp, banjo
 - D. guitar, cello, recorder, clarinet

5. Which of the following instruments is indigenous to the island of Trinidad & Tobago?
 - A. Banjo
 - B. Saxophone
 - C. Steelpan
 - D. Trumpet

6. Which one of the following styles of music Did Not originate in the Caribbean?

- A. Calypso
- C. Hip Hop

- B. Reggae
- D. Soca

7. An Orchestra is often directed by a person who ensures every one plays correctly. This person is also referred to as

- A. a musician
- C. a singer

- B. a conductor
- D. a band member

8. Information is often recorded in symbols. Which of the following symbols is related to music?

- A. 
- C. Δ

- B. $=$
- D. $+$

9. Alston "Becket" Cyrus is famous for which type of music?

- A. Folk
- C. Hip Hop

- B. Soca
- D. Reggae

Questions 10 and 11 refer to the four meals shown below which were prepared by four persons at a food fair.

Rice Grape Juice Baked Beans Yam Pie Vegetable Salad
--

Miss Jack

Roasted Breadfruit Stewed Mutton Red Beans Pineapple Drink Avocado
--

Mr. Sam

Fried Rice Soya Chunks Vegetable Salad Cherry Juice Avocado

Miss Peters

Macaroni Pie Plain Rice Stewed Beef Scald Yam Peanut Punch
--

Mrs. May

10. Which TWO persons prepared a vegetarian meal?

- A. Mr. Sam & Miss Peters
- B. Mr. Sam & Mrs. May
- C. Miss Jack & Miss Peters
- D. Mrs. May & Miss Jack

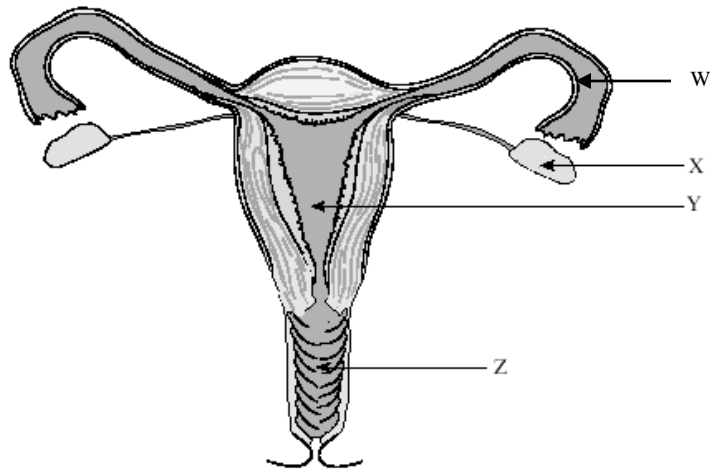
11. Which person prepared food from ALL six food groups?

- A. Miss Jack**
- B. Miss Peters**
- C. Mr. Sam**
- D. Mrs. May**

12. Pregnant women who smoke have a higher risk of all the following happening EXCEPT

- A. having a miscarriage
- B. having too small a baby
- C. having too big a baby
- D. having the baby born dead.

Items 13, 14 and 15 are based on the diagram below.



13. In which area would a baby normally develop?

- A. Z
- B. Y
- C. X
- D. W

14. The name of the part labeled "X" is the

- A. uterus
- B. testes
- C. oviduct
- D. ovary

15. Normal fertilization of an egg (ovum) will occur at

- A. Z
- B. Y
- C. X
- D. W

16. One reason why children may run away from home is because they are

- A. happy
- B. lucky
- C. abused
- D. loving

17. Persons with high self-esteem usually

- A. lack self-confidence
- B. feel lovable and capable
- C. feel unproductive
- D. cannot accept praises easily

18. Which of the following two organs are protected by the ribs?

- A. kidneys and lungs
- B. kidneys and heart
- C. heart and lungs
- D. breast and heart

19. Which of the following comprises a healthy snack?

- A. potato chips and ju-c
- B. corn curls and milk
- C. plantain chips and pepsi
- D. fresh fruit and milk

20. Andy was upset when Tom was called "fat boy" because he knows what it feels like to be called "names." This is an example of

- A. empathy
- B. decision making
- C. co-operation
- D. conflict resolution

21. Which is likely to be the temperature of a person who has a fever?

- A. 100° C
- B. 40° C
- C. 37° C
- D. 30° C

22. Sue listened to the "Throne Speech" during the last sitting of Parliament. The voice Sue heard delivering the speech was that of

- A. The Leader of the Opposition**
- B. The Prime Minister**
- C. The Governor General**
- D. The Speaker of the House**

23. Kanu is a Carib Chief or Ouboutou. He most likely got his position by
- A. being elected by the village elders
 - B. showing superior skills at war
 - C. inheriting the position from his father
 - D. showing qualities as a magician
24. John is a Vincentian of Carib descent. In which other Caribbean Island is he most likely to find other Carib descendants?
- A. Dominica
 - B. Grenada
 - C. Jamaica
 - D. Martinique
25. In the Arawak society most of the planting of crops was done by
- A. Boys
 - B. Girls
 - C. Men
 - D. Women
26. All of the following are tourist attractions in St. Vincent & the Grenadines, **EXCEPT** the
- A. Botanical Gardens
 - B. Falls of Baleine
 - C. Diamond Landfill
 - D. Vermont Nature Trail
27. Which of the following would **NOT** help to promote tourism in St. Vincent & the Grenadines?
- A. Crime and violence
 - B. Inexpensive souvenirs
 - C. Low hotel rates
 - D. Clean beaches

28. One of the common ways in which early people communicated with each other was by using

- A. smoke signals
- B. telegrams
- C. letter
- D. CB radios

29. On the Coat of Arm of St. Vincent and the Grenadines the statement “**Pax et Justitia**” means

- A. Gem of the Antilles
- B. Home of the Blessed
- C. Justice of the Peace
- D. Peace and Justice

30. Which of these countries is a member of Caricom?

- A. Argentina
- B. Guyana
- C. Cuba
- D. Martinique

31. Which of these capitals is correctly linked with the island on which it is located?

	Country	Capital
A.	Antigua	Port-of-Spain
B.	Barbados	Bridgetown
C.	Dominica	St. John’s
D.	Trinidad	Castries

32. An example of a **secondary industry** is

- A. quarrying stones
- B. cultivating bananas
- C. catching fish
- D. processing wheat

33. Sam exports plantains to Trinidad every week. In what type of trade is he involved?

- A. internal
- C. regional

- B. local
- D. international

34. Which of the following groups of villages in St. Vincent is referred to as "Carib Country"?

- A. Brighton, Owia, Stubbs
- C. Sandy Bay, Owia, Fancy

- B. Greggs, Owia, Colonaire
- D. Sandy, Fancy, Belair

35. The Government of St. Vincent and the Grenadines will introduce a new system of taxes in the year 2007. The name of this tax is

- A. Airport Tax
- C. Income Tax

- B. Consumption Tax
- D. Value Added Tax

36. National Heroes Day in St. Vincent and the Grenadines is celebrated on

- A. January 22nd
- C. August 1st

- B. March 14th
- D. October 27th

37. The name of the first National Hero of St. Vincent and the Grenadines is

- A. Joseph Chatoyer
- C. George McIntosh

- B. Ebenezer Joshua
- D. Hugh Mulzac

Items 38, 39 and 40 are about the Caribbean. Use the map below to assist you in answering these items.



38. What is the name of the body of water labelled X?

- A. Atlantic Ocean
- B. Indian Ocean
- C. Caribbean Sea
- D. Pacific Ocean

39. Which of the following countries is located in Central America?

- A. Belize
- B. Florida
- C. Columbia
- D. Guyana

40. St. Vincent belongs to a group of islands known as

- A. Greater Antilles
- B. Windward Islands
- C. Leeward Islands
- D. Bahamas

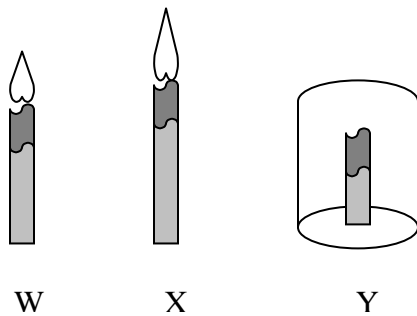
41. In the Caribbean the usual means of choosing a government is by

- A. appointment
- B. election
- C. nomination
- D. revolution

42. The following historical milestones refer to the political development of St. Vincent. Which one of the following sets of events shows the order in which these milestones occurred?

- A. Statehood, Independence, Crown Colony
- B. Statehood, Crown Colony, Independence
- C. Crown Colony, Independence, Statehood
- D. Crown Colony, Statehood, Independence

Questions 43 and 44 are based on the following diagrams



Here are four (4) statements.

- (i) *Candle Y is not burning.*
- (ii) *Air is necessary for burning.*
- (iii) *Candle Y is not burning because someone blew out the flame.*
- (iv) *The greater the supply of air, the longer the candle will burn.*

43. The hypothesis being tested is

- A. larger candles burn longer than shorter candles
- B. The greater the supply of air the longer the candle will burn.
- C. The larger the candle the brighter the flame.
- D. Air is necessary for burning.

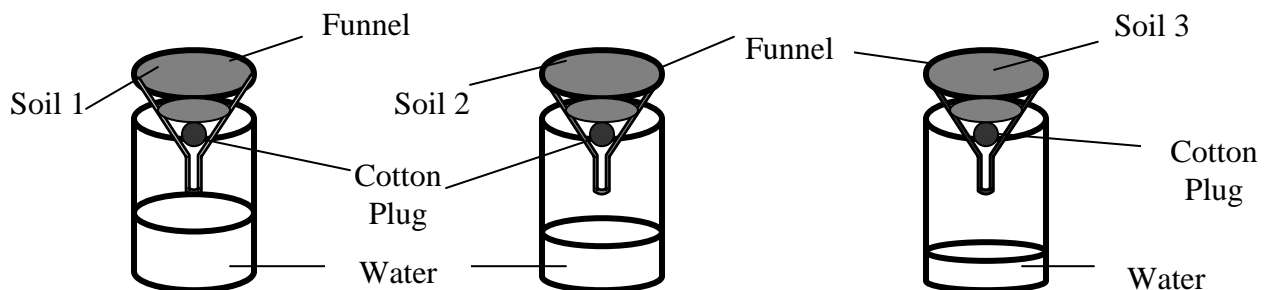
44. Which of the statements is an OBSERVATION?

- A. i
- B. ii
- C. iii
- D. iv

Questions 45 and 46 are based on the following information

Michael conducted an experiment to observe the rate at which water flows through different kinds of soils. He placed 250 grams of soil in each funnel and poured 100 ml of water on each type of soil.

After one hour, he recorded his observations.



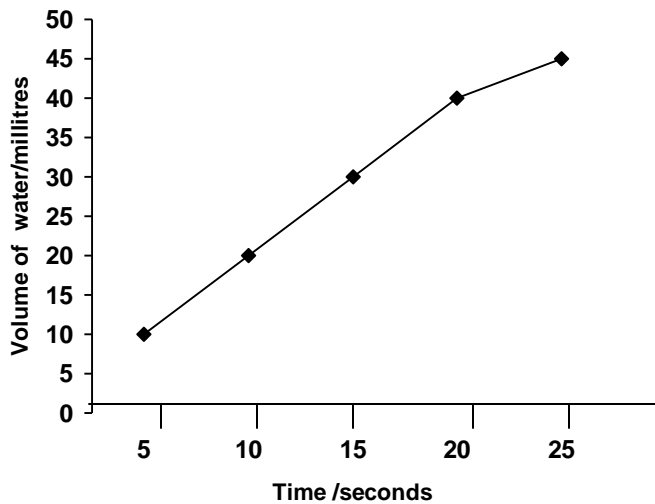
45. Michael should conclude that

- A. Soil 1 is Clay Soil 2 is Sand Soil 3 is Loam
- B. Soil 1 is Sand Soil 2 is Clay Soil 3 is Loam
- C. Soil 1 is Loam Soil 2 is Clay Soil 3 is Sand
- D. Soil 1 is Sand Soil 2 is Loam Soil 3 is Clay

46. The manipulated variable in this experiment is the

- A. amount of soil
- B. amount of water added
- C. type of soil
- D. amount of water collected

Questions 47 and 48 are based on the following graph.



The graph above shows the rate at which a piece of blotting paper absorbed water from a container.

47. What volume of water was absorbed during the first 10 seconds?

- A. 10 ml
- B. 20 ml
- C. 30 ml
- D. 40 ml

48. How long did the blotting paper take to absorb 40 ml of water?

- A. 5 seconds
- B. 10 seconds
- C. 15 seconds
- D. 20 seconds

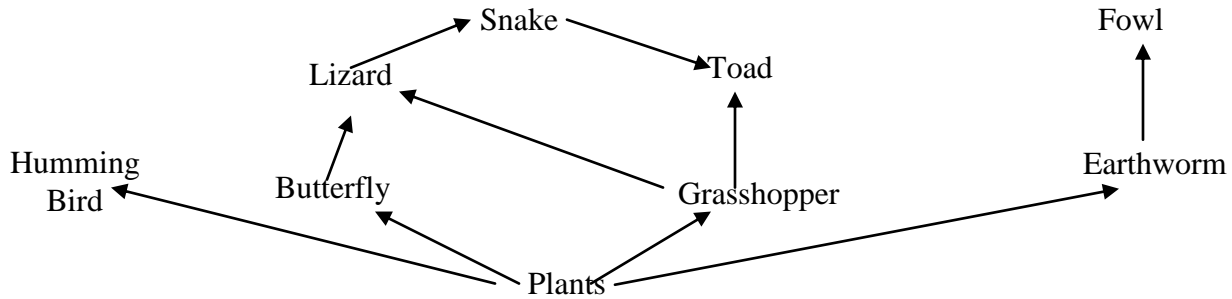
49. A student used a bar magnet to pick up some metal tacks. The observations were recorded as shown below.



The student should conclude that

- A. tacks are attracted to the ends of magnets only.
 - B. the magnet is stronger at its poles.
 - C. the strength of the magnet depends on the material it attracts.
 - D. magnets can attract only tacks.
50. A large electromagnet, suspended from a crane, picks up pieces of scrap iron but not the rubber tyres in the scrap yard. Which of the following is a hypothesis based on this information?
- A. Electromagnets do not attract non-metals
 - B. Electromagnets can be easily demagnetised
 - C. Electromagnets are cheap to operate
 - D. Electromagnets have North and South poles
51. Which of the following is an example of a chemical change?
- A. Burning a piece of paper
 - B. Mixing sugar and water
 - C. Grating a carrot
 - D. Breaking a glass

Use the diagram of the food web to answer Questions 52, 53 and 54



52. In the food web above the herbivores are

- A. Butterfly, grasshopper, lizard
- B. Butterfly, hummingbird, earthworm
- C. Hummingbird, grasshopper, lizard
- D. Lizard, grasshopper, earthworm

53. A member of the food web that competes with the grasshopper for food is the

- A. lizard
- B. toad
- C. earthworm
- D. snake

54. If all the plants were destroyed by a disease, what would happen in the food web?

- A. The grasshopper would eat the butterflies
- B. The hummingbird would eat the butterflies
- C. The food web would form food chains
- D. Everything would die

55. When a honey bee visits a flower, it deposits pollen on the

- A. stigma
- C. anther

- B. style
- D. filament

56. Following fertilization in plants, the X develops into the fruit and the Y develops in the seed.

	X	Y
A.	Ovule	Ovary
B.	Ovary	Ovule
C.	Ovule	Stigma
D.	Ovary	Style

57. Bertram poured 200 ml of water into a dish and left it in the sun. After two hours, he measured the volume of water remaining in the dish and observed it was 100 ml.

The measuring device Bertram would use to measure the volume of water is

- A. a measuring cylinder
- C. a spoon

- B. a jam jar
- D. a glass

58. A bulb converts electrical energy into

- A. heat and light
- C. light and current

- B. light and sound
- D. light only

Items 59 and 60 are based on the following information.

A mixture of sugar and water was boiled in a pot until all the water disappeared leaving the sugar behind.

59. In the mixture, the sugar is called the

- A. residue
- B. solute
- C. solvent
- D. filtrate

60. Which one of the following methods was used to separate the sugar from the water?

- A. Condensation
- B. Evaporation
- C. Filtration
- D. Sedimentation