

# MINISTRY OF EDUCATION

## ST. VINCENT AND THE GRENADINES



## COMMON ENTRANCE EXAMINATION

2007

### GENERAL PAPER

TEST CODE: 013A

**Time allowed: 1 Hour & 30 minutes**

**Instructions:**

1. This examination has 60 items.  
Each item has four possible answers:     **A, B, C, D.**  
Choose the correct answer.
2. On your answer sheet, shade the circle which contains the letter you have chosen for your answer.

**Please use a No. 2 HB pencil**

3. **Do not take any paper out of the examination room.**  
Return this booklet, your answer sheet and all scrap paper to the invigilator before you leave the room.
4. You have **90 minutes** in which to complete this test.

1. The 2007 Cricket World Cup was played in:

- A. Australia
- B. England
- C. India
- D. West Indies

2. Mr. Brian Charles Lara is internationally known for the sport of;

- A. Golf
- B. Football
- C. Cricket
- D. Basketball

3. The obelisk located at Dorsetshire Hill was erected in memory of;

- A. Joseph Chatoyer
- B. E. T. Joshua
- C. Robert Milton Cato
- D. George Mc Intosh

4. Which line in the National Anthem of St. Vincent and the Grenadines suggests that it is a country of several islands?

- A. "Your mountains high so clear and green."
- B. "A haven, calm, serene."
- C. "Hairoun our fair and blessed isle."
- D. "Our little sister islands are."

5. Value Added Tax (VAT) in St. Vincent and the Grenadines is NOT charged on;

- A. Cars
- B. TV sets
- C. CDs
- D. Medicine

6. Which country is correctly matched to its capital?

|    | <b>Country</b> | <b>Capital</b> |
|----|----------------|----------------|
| A. | St. Lucia      | St. Georges    |
| B. | Grenada        | Georgetown     |
| C. | Guyana         | Castries       |
| D. | Trinidad       | Port-of-Spain  |

7. The Grenadine islands are located between;
- A. St. Vincent and Grenada
  - B. St. Vincent and St. Lucia
  - C. Grenada and Trinidad
  - D. St. Vincent and Barbados
8. Lines of latitude and longitude help us to;
- A. Separate countries
  - B. Know the imports of a country
  - C. Divide oceans and seas
  - D. Locate places on a map
9. The Garifuna tribe originated from the union between the:
- A. Yellow Caribs and Negroes
  - B. Negroes and Arawaks
  - C. Negroes and Whites
  - D. Caribs and Arawaks
10. The slaves who worked on the sugar plantation in the West Indies were mainly:
- A. Europeans
  - B. Indians
  - C. Africans
  - D. Syrians
11. John visits St. Vincent every year to be a part of a unique Christmas activity. Which activity is this?
- A. Carnival
  - B. Nine Mornings
  - C. Kite Flying
  - D. Independence Rally

12. Which of these public holidays in St. Vincent is given in memory of the death of Christ?

- A. National Hero's Day
- B. Good Friday
- C. Independence Day
- D. Emancipation Day

13. These two islands are members of both the OECS and CARICOM?

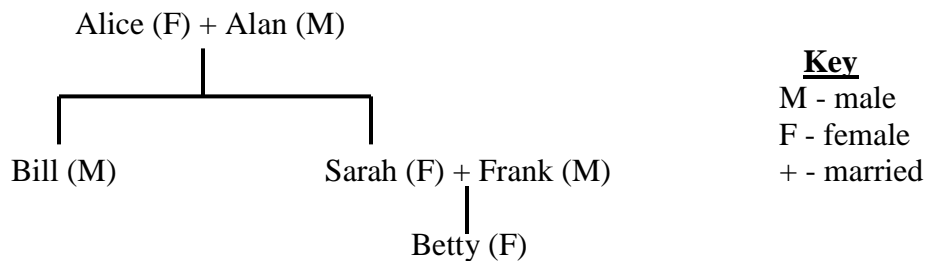
- A. St. Lucia and St. Vincent
- B. St. Kitts and Barbados
- C. Antigua and Jamaica
- D. Trinidad and Dominica

**14. CSME means:**

- A. Commonwealth Single Market and Economy**
- B. Caribbean Single Market and Economy**
- C. Common Single Market and Economy**
- D. CARICOM Single Manufacturing Enterprise**

**This is Betty's Family Tree.**

**Use the information on the family tree below to answer items 15 and 16.**



15. What is the relationship between Alice and Betty?

- A. Alice is Betty's grandmother
- B. Alice is Betty's mother
- C. Betty's is Alice's neice
- D. Betty's is Alice's cousin

16. Bill is Frank's

- A. brother
- B. brother-in-law
- C. uncle
- D. father

Items 17 to 18 are based on the flags shown below.

At a CARICOM Heads of Government meeting in St. Vincent each representative sat in the seat in front his/her country's flag.



1



2



3



4



5

17. Where did the representative for St. Vincent and the Grenadines sit?

- A. 1
- B. 2
- C. 4
- D. 5

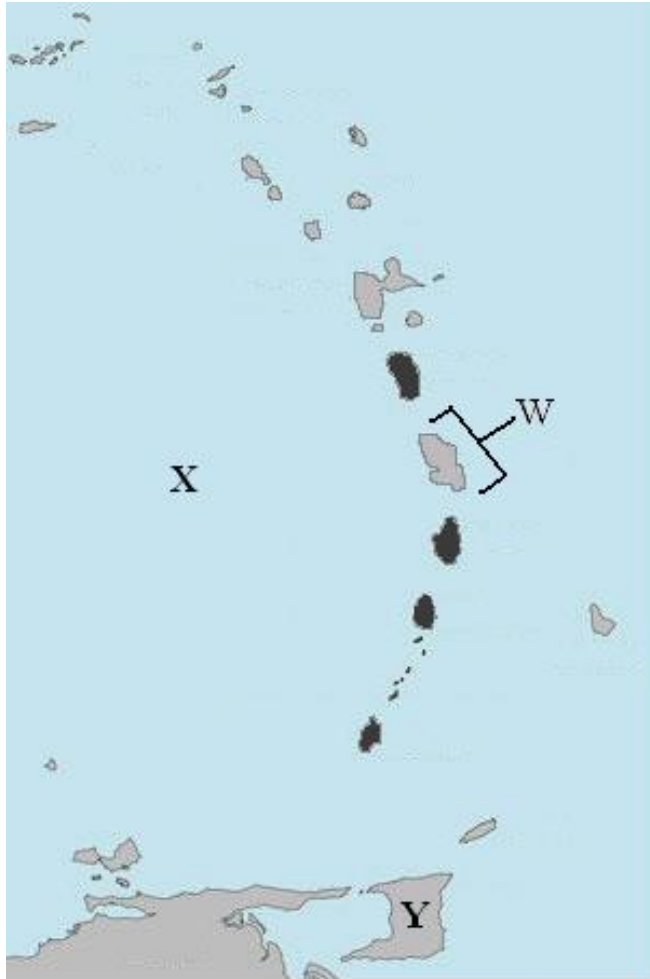
18. The representative from which country sat in front of flag # 3 ?

- A. St. Lucia
- B. Grenada
- C. Barbados
- D. St. Vincent

**19. Which of these foods was popular with the Caribs?**

- A. Dasheen**
- B. Breadfruit**
- C. Plantain**
- D. Cassava**

Items 20 to 23 are about the Caribbean islands. Use the map to assist you in answering these items.



20. The country labelled **Y** exports to St. Vincent and the Grenadines;

- A. Petroleum products
- B. Bauxite
- C. Lumber
- D. Sand

21. The Islands shaded black are the?

- A. Leeward Islands
- B. Mainland Territories
- C. Windward Islands
- D. Greater Antilles

22. The body of water labelled **X** is the?

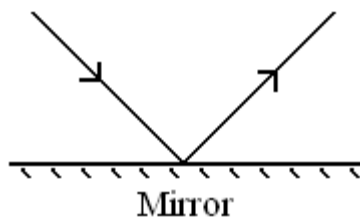
- A. Atlantic Ocean
- B. Pacific Ocean
- C. Caribbean Sea
- D. Mediterranean Sea

23. The main language spoken by the country labelled **W** is;

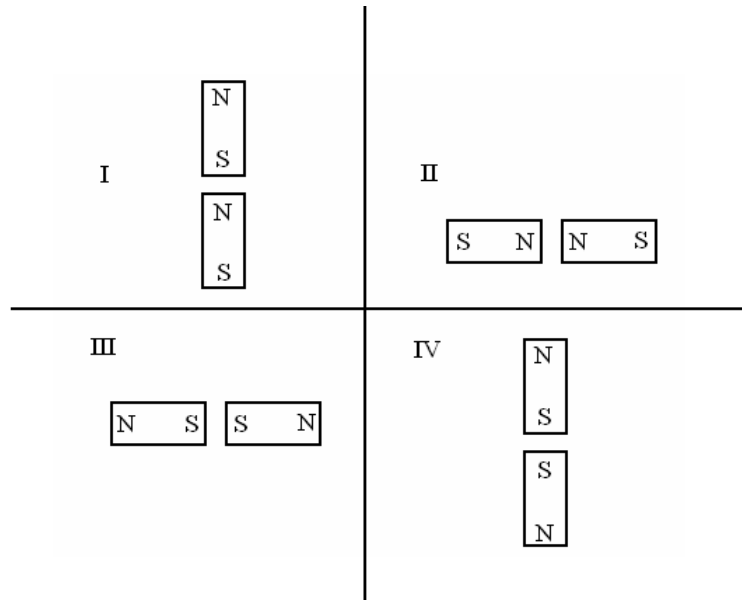
- A. Spanish
- B. English
- C. Dutch
- D. French

24. When a beam of light shines on a smooth, hard surface, such as a mirror, It bounces off. This process is called;

- A. Refraction
- B. Reflection
- C. Radiation
- D. Resistance

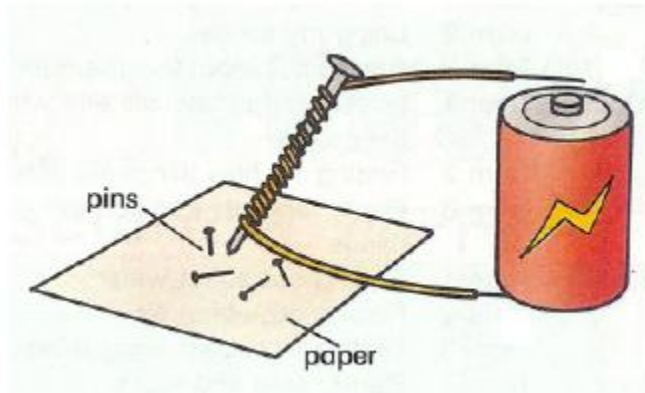


25. Two bar magnets are arranged in four different ways as shown below. In which arrangement will the magnets attract each other?



- A. I
- B. II
- C. III
- D. IV

The following diagram shows an electromagnet. Use the diagram to answer question 28.

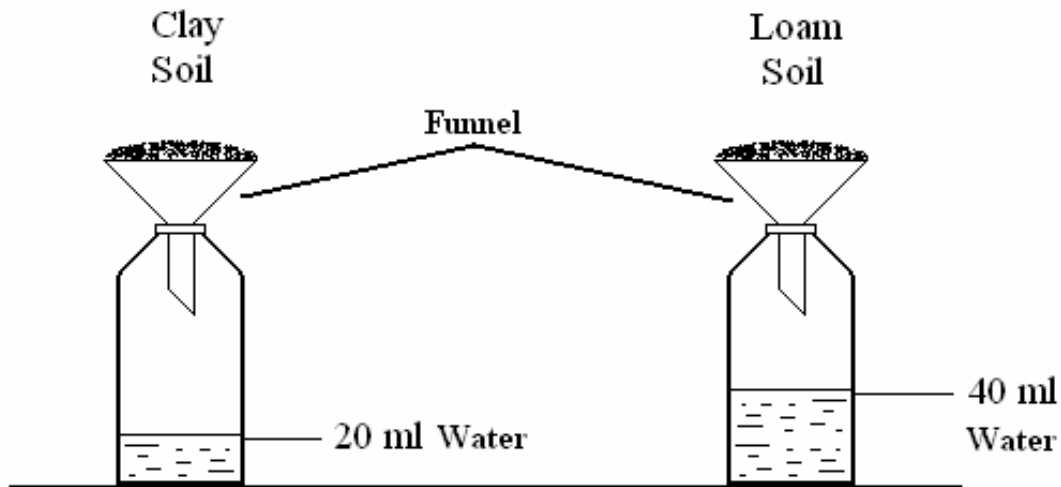


26. In the diagram, when the wire is connected to the terminals of the battery, the pins will:?

- A. Move toward the battery
- B. Move toward the nail
- C. Not move
- D. Move away from the nail

Use the following information to answer questions 27 and 28.

A volume of 100 ml of water was poured onto the soil in each of the funnels shown below.



27. What volume of water is **retained** by the clay soil?

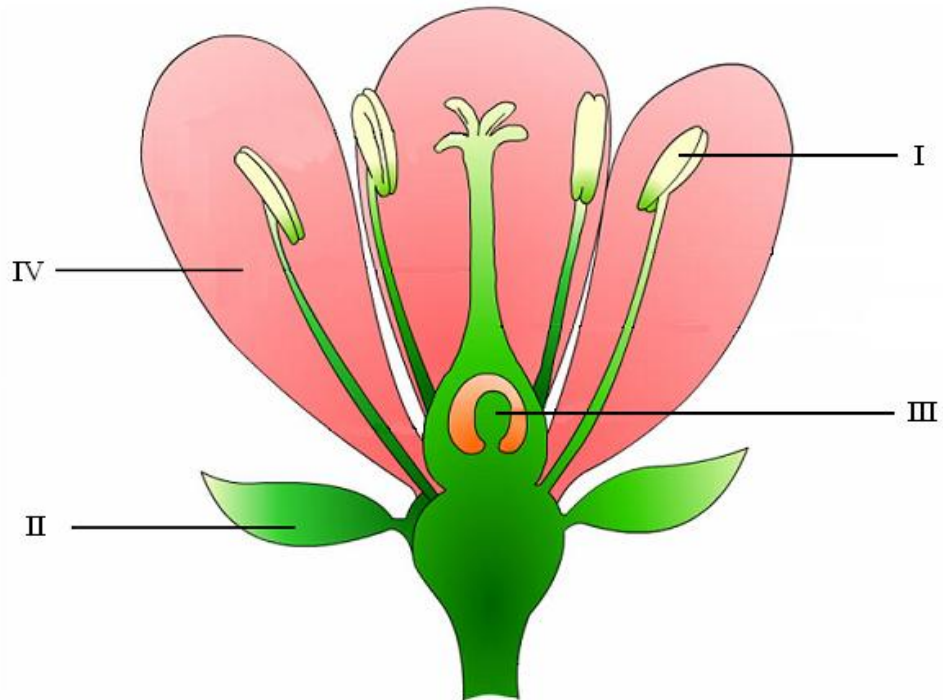
- A. 20 ml
- B. 40 ml
- C. 60 ml
- D. 80 ml

28. The conclusion that can be drawn from the results of this experiment is that:

- A. Clay soil retains more water than loam soil
- B. Clay soil drains faster than loam soil
- C. Clay soil has more airspaces than loam soil
- D. Loam soil is more fertile than clay soil



Questions 29 and 30 are based on the diagram of a flower shown below.



29. The part of the flower labelled **I** is the;

- A. Anther
- B. Ovary
- C. Petal
- D. Stigma

30. The main purpose of the part labelled **IV** is to:

- A. Secrete nectar
- B. Develop into a fruit
- C. Attract insects
- D. Produce pollen

31. The part of the flower which develops into the seed is

- A. I
- B. II
- C. III
- D. IV

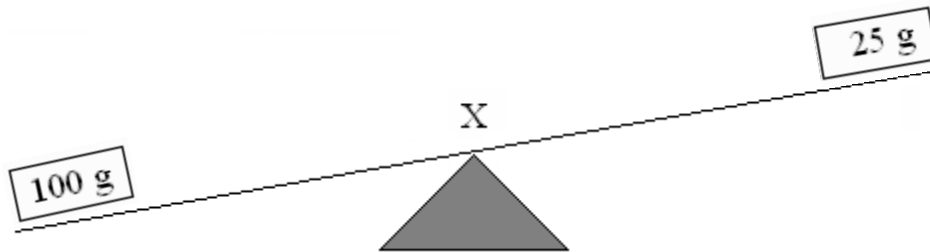
32. Which of the following sets has only mammals?

- A. Whale, bat, dog, and monkey
- B. Whale, dolphin, shark, and eel
- C. Tiger, elephant, dove, and goat
- D. Human, rabbit, herring, and crocodile.

33. All of these are good insulators of electricity except;

- A. Plastic
- B. Copper
- C. Wood
- D. Glass.

Use the diagram below to answer questions 33 and 34.



34. In the above diagram **X** is at the midpoint of the rod. What is at the point marked **X**?

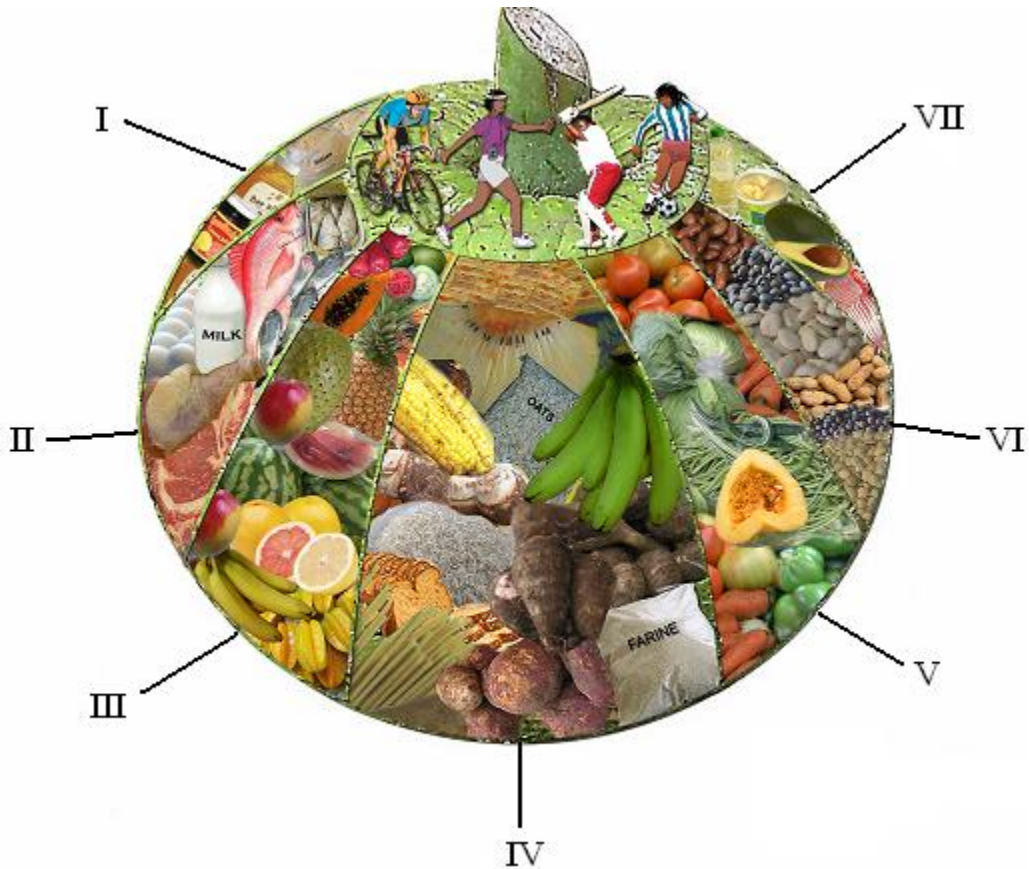
- A. Effort
- B. Load
- C. Pivot (fulcrum)
- D. Weight

35. What mass would have to be added to the 25 gram mass to make the rod balance?

- A. 25g
- B. 50g
- C. 75g
- D. 100g

36. Approximately how long does it take the moon to travel around the Earth?

- A. 1 day
- B. 1 week
- C. 1 month
- D. 1 year



Use the information to answer questions 36-37

37. Which food group is represented by the number 'IV'?

- A. Staples
- B. Legumes
- C. Fats and Oils
- D. Food from animals

38. What is the name of the main nutrient found in the group of foods labelled 'II'?

- A. Fats
- B. Vitamins
- C. Carbohydrates
- D. Protein

39. Which of the following diseases results from a lack of nutrients found in III ?

- A. Scurvy
- B. Rickets
- C. Anaemia
- D. Beri-beri

Use the passage below to answer questions 40 and 41.

*John and Mary are home alone. Their mother has gone to the market. Before she left, she instructed: "Make sure you wash the dishes". John and Mary can't decide who should wash the dishes and begin to argue.*

40. What type of conflict are John and Mary experiencing?

- A. Domestic
- B. Spiritual
- C. Social
- D. Mental

41. How should John and Mary best resolve the conflict?

- A. Start a fight
- B. Wash the dishes together
- C. Leave the dishes in the sink
- D. Ask their friends' opinion and do what they say

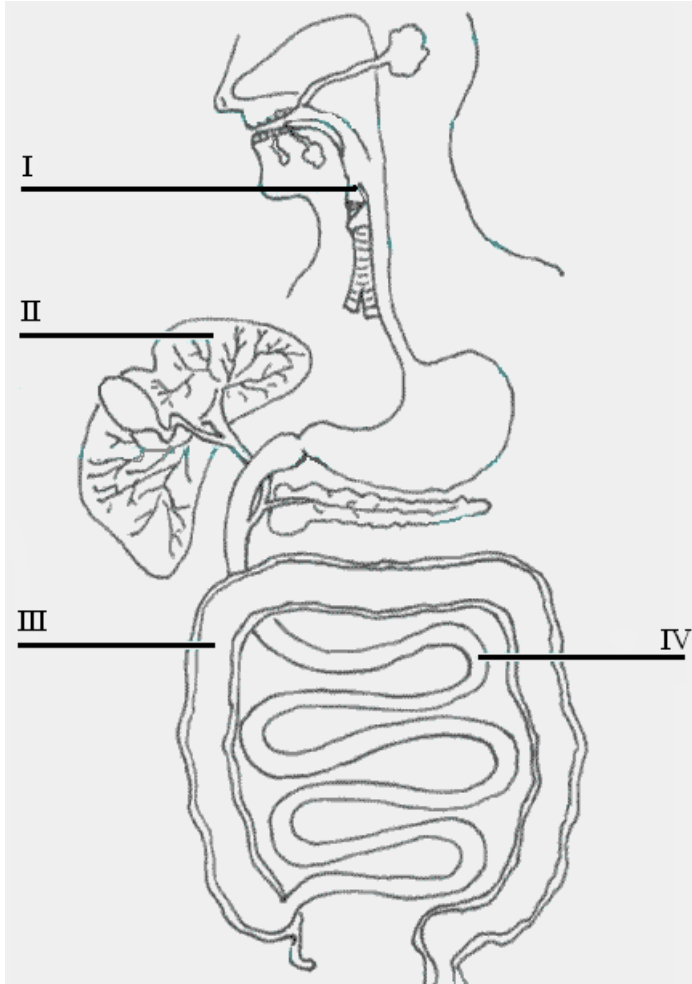
42. The name that is given to the liquid part of the blood is;

- A. water
- B. plasma
- C. platelets
- D. haemoglobin

43. Blood transports all the of the following **EXCEPT**;

- A. urea
- B. oxygen
- C. carbon dioxide
- D. faeces

Items 44 to 46 refer to the diagram below



44. The diagram represents the;

- A. nervous system
- B. reproductive system
- C. digestive system
- D. respiratory system

45. The name of the part labelled “IV” is the;

- A. large intestine
- B. small intestine
- C. pancreas
- D. rectum

**46. A function of the part labelled “III” is to;**

- A. filter the blood**
- B. extract nutrients from foods**
- C. excrete waste products**
- D. absorb water into the blood stream**

47. What does the abbreviation HIV stand for?

- A. Human Influenza Virus
- B. Herpes Influenza Virus
- C. Human Immunodeficiency Virus
- D. Herpes Immunodeficiency Virus

48. HIV may be transmitted through all of the following **EXCEPT**;

- A. Mosquito bites
- B. shared needles
- C. unprotected sex
- D. blood transfusion

49. All of the following are benefits of exercise **EXCEPT**;

- A. Losing weight
- B. Keeping healthy
- C. Developing muscles
- D. Decreasing body temperature

50. This Vincentian singer is the 2006 Digicel Rising Star.

- A. Kiokya Cruickshank
- B. Kevin Lyttle
- C. Kyron Baptiste
- D. Orandi (Bomani) Charles




51. The Musical Alphabet is:

- A. D, E, F, G, H, I, J
- B. F, G, H, I, J, K, L
- C. A, B, C, D, E, F, G
- D. B, C, D, E, F, G, H

52. Which of the following instruments was invented in the Caribbean during the 20<sup>th</sup> Century?

- A. Guitar
- B. Saxophone
- C. Steelpan
- D. Trumpet

53. Which one of the following is **NOT** a musical sign?

- A.  B.  C. @ D. 

**Use the following information to answer questions 54 and 55.**

**Mark lives in St. Lucia but spends his school holidays with his uncle in Jamaica.**

54. What type of tourist is Mark?

- A. Cruise tourist
- B. Domestic tourist
- C. International tourist
- D. Regional tourist

55. Which one of the following places is Mark likely to visit while in Jamaica?

- A. La Soufriere
- B. Blue Mountains
- C. The Pitons
- D. The Pitch Lake

56. A tourist who wants to visit a limestone cave will go to;

- A. St. Vincent
- B. Grenada
- C. Barbados
- D. Dominica

57. Katrina, Ivan, Hugo, and Gilbert are all names of;

- A. Hurricanes
- B. Earthquakes
- C. Tsunamis
- D. Volcanoes

58. Lava flow and ash are associated with;

- A. Floods
- B. Earthquakes
- C. Volcanic Eruptions
- D. Hurricanes

59. Which of the following will people **NOT** be advised to do when there is a hurricane warning?

- A. Buy tin food
- B. Collect clean water
- C. Listen to the radio
- D. Go to party

60. **The Head of State in St. Vincent and the Grenadines country is known as the:**

- A. Prime Minister**
- B. Governor General**
- C. President**

## **D. Governor**